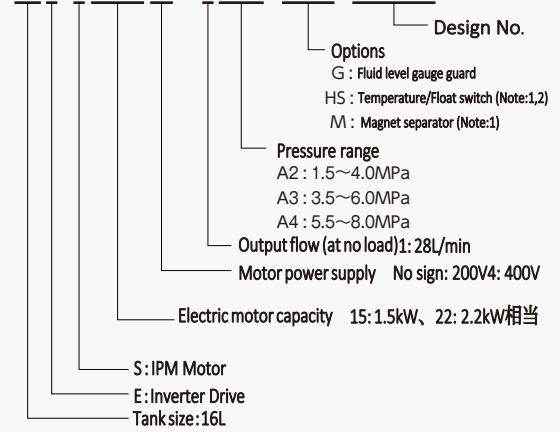


Specifications

Power supply	200V: 3φAC 200V~240V、50/60Hz 400V: 3φAC 380V~480V、50/60Hz
Rated input current	200V: 7.5A/1.5kW、11.0A/2.2kW 400V: 4.4A/1.5kW、6.0A/2.2kW
Pressure range	A2 : 1.5~4.0MPa A3 : 3.5~6.0MPa A4 : 5.5~8.0MPa
Output flow (at no load)	1A※ : 28L/min
Hydraulic fluid	Standard mineral-based hydraulic fluid (equivalent to ISO VG 32)
Hydraulic fluid temperature	15~60°C
Color of paint	Munsell No. N1 (semigloss), JPMA No. AN-10 equivalent
Ambient temperature/humidity	0 to 35°C/20 to 85% RH (no condensation) (Keep the unit away from water-soluble cutting fluid mist.)

Explanation of model numbers

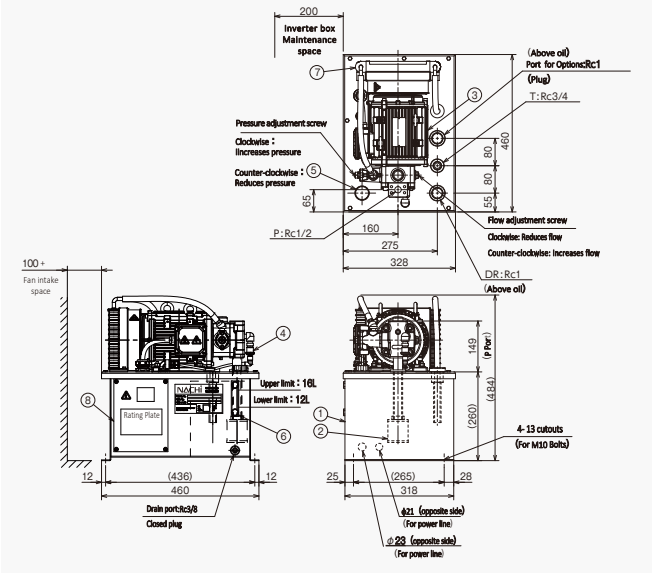
NSP-16E-S□□□VIA-□□-159 OA



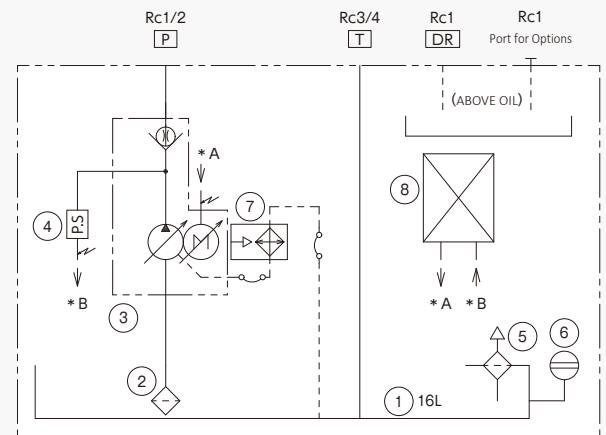
Note

- Both HS and M cannot be installed.
- Temperature: ON at 60 °C (A-contact); float: ON at lower limit (A-contact).

Installation dimensions



Hydraulic circuit



- Oil Tank
- Suction strainer
- Uni-Pump
- Pressure sensor
- Hydraulic fluid inlet
- Oil level gauge
- Cooling radiator
- Inverter control Box

使用上の注意



- Turning the inverter on and off by cutting the main power supply (circuit breaker) significantly reduces the life of the inverter and should be limited to once an hour or less. Contact us if you need to start and stop operations frequently.
- On changing the parameter for inverter, never use the parameters except shown in the instruction manual. Otherwise it may not work normally.
- Use a 1/2 inch diameter two meter long flexible hose rated for maximum 14 MPa to connect the hydraulic unit's P port (discharge port) and the external manifold (or actuator).
- Maximum peak pressure (set pressure + surge pressure) must be within 14 MPa. Install a relief valve on the hydraulic circuit side to cut surges if peak pressure is higher than 14 MPa.
- Volume of leakage on external hydraulic circuits must be less than 1 L/min. Consult us if leakage on external hydraulic circuit is greater than 1 L/min.
- Volume of hydraulic fluid in the tank must stay within the range visible on the fluid level gage.
- Keep a distance of at least 100 mm between the air intake of the radiator and the surrounding area.

NACHI
株式会社 不二越

<https://www.nachi-fujikoshi.co.jp>

Tokyo Head Office

Tel: 03-5568-5111

NACHI AMERICA INC. HEAD QUARTERS
 NACHI EUROPE GmbH
 NACHI TECHNOLOGY (THAILAND) CO., LTD.
 NACHI SINGAPORE PTE. LTD.
 NACHI (SHANGHAI) CO., LTD.
 FUJIKOSHI-NACHI (MALAYSIA) SDN. BHD.

Tel: +1-317-530-1001 <http://www.nachiamerica.com/>
 Tel: +49-(0)2151-65046-0 <http://www.nachi.de/>
 Tel: +66-2-714-0008 <http://www.nachi.co.th/>
 Tel: +65-65587393
 Tel: +86-(0)21-6915-2200 <http://www.nachi.com.cn/>
 Tel: +60-(0)3-80247900

● Specifications and configurations may change due to product developments without prior notice.

CATALOG NO.

9250

2024.7.Z-EP-MIZUNO